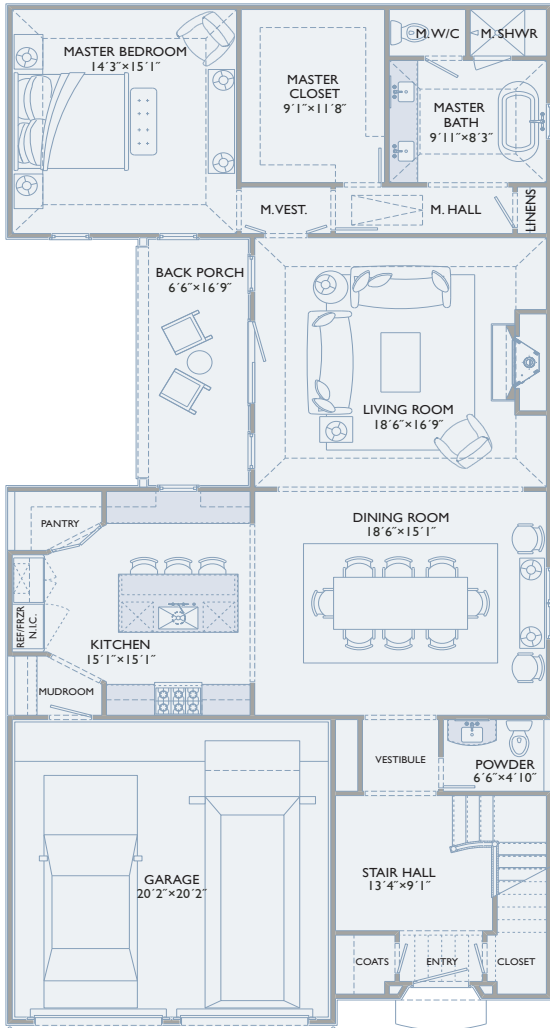




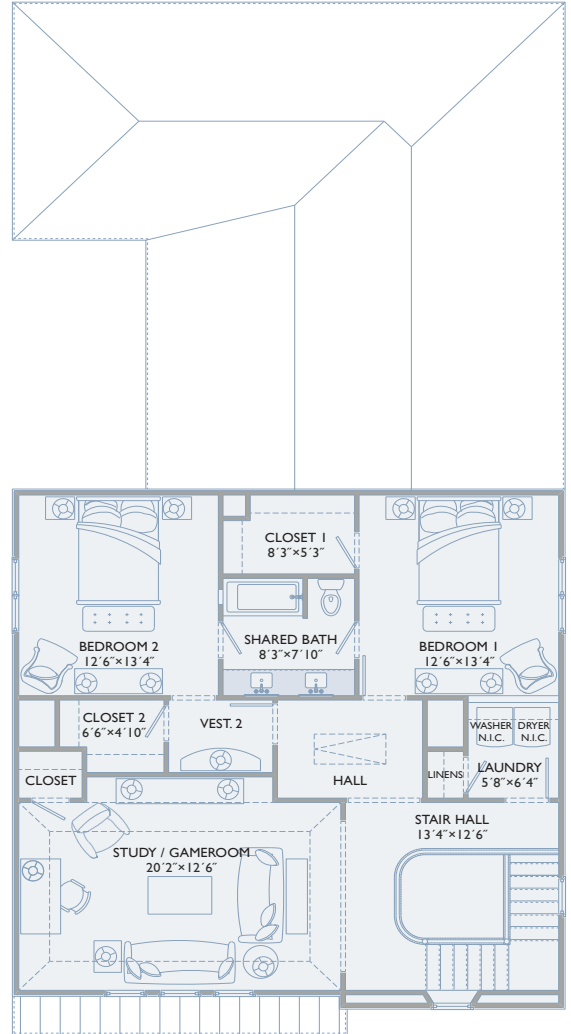
MARAVILLA COURT

UNIT D-4



FIRST FLOOR

Interior - 1,658 Square Feet
Patio - XXX Square Feet



SECOND FLOOR

Interior - 1,170 Square Feet

A DEVELOPMENT BY BUTLER BROTHERS

1717 PINE CHASE DRIVE | HOUSTON, TEXAS 77055 | TEL 713.558.3308 | MARAVILLACOURT.COM



BUTLER BROTHERS



PRICES AND SPECIFICATIONS SUBJECT TO CHANGE WITHOUT NOTICE. PLEASE NOTE THESE IMAGES ARE MEANT TO EVOKETHE CHARACTER & MOOD OF THE DESIGN AND NOT MEANT TO REPRESENT EXACT FEATURES OR MATERIALS. THIS INFORMATION IS DEEMED RELIABLE BUT NOT GUARANTEED.

Martha
Turner | Sotheby's
INTERNATIONAL REALTY



MARAVILLA COURT

UNIT D-4



Interior 2,828 Square Feet
Patio XXX Square Feet

Total X,XXX Square Feet

A DEVELOPMENT BY BUTLER BROTHERS

1717 PINE CHASE DRIVE | HOUSTON, TEXAS 77055 | TEL 713.558.3308 | MARAVILLACOURT.COM



BUTLER BROTHERS



PRICES AND SPECIFICATIONS SUBJECT TO CHANGE WITHOUT NOTICE. PLEASE NOTE THESE IMAGES ARE MEANT TO EVOKETHE CHARACTER & MOOD OF THE DESIGN AND NOT MEANT TO REPRESENT EXACT FEATURES OR MATERIALS. THIS INFORMATION IS DEEMED RELIABLE BUT NOT GUARANTEED.

Martha
Turner

Sotheby's
INTERNATIONAL REALTY